

ELA premium container

3 metre wide with potential savings
up to 25 percent

ela[container]



Brief Description

Half a metre wider – the ELA premium container offers more space for living and working. Featuring a width of 3 metres, it contains around 20 percent more floor space than an ELA quality all-rounder. In addition to the improved feeling of space, this also generates attractive savings potential: fewer containers are needed for the same usable space.

The 3 m² of extra space supports advantageous furnishing variations, such as for offices that have three workstations instead of two. The interior is also designed to be divided up in a very flexible manner: a small corridor or sanitary area can be integrated with ease.

ELA premium containers are universal in application thanks to individual equipment. The comprehensive range of accessories and furnishings provides complete facilities for offices, schools, kindergartens, sleeping accommodation, lounges and changing rooms. Communications technology, heaters and air-conditioning units are also included in the delivery on request.

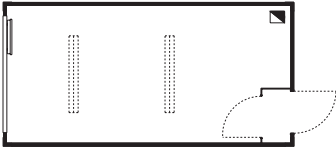
ELA premium container meets the high quality standards of ELA: certified quality – made in Germany.

Features

- + Hot-dip galvanised, free-standing steel frame construction
- + Triple stackable
- + Galvanised aluminium, 0.75 mm thick, accessible hard roofing (according to DIN 12944)
- + Integrated roof drainage with leaf grates
- + Hot-dip galvanised dead floor with protective coating
- + Exterior: hot-dip galvanised, 0.63 mm thick, beaded steel sheeting
- + Interior: hot-dip galvanised smooth metal sheet, 0.63 mm thick, with plastic-coated decorative film (magnetic)
- + Carpet or PVC flooring in brown or marbled grey
- + Insulation values PUR rigid foam
 - Roof: 80 mm PUR rigid foam, $U = 0.297 \text{ W/m}^2\text{K}$
 - Walls: 50 mm PUR rigid foam, $U = 0.456 \text{ W/m}^2\text{K}$
 - Floor: 50 mm PUR rigid foam, $U = 0.438 \text{ W/m}^2\text{K}$
- + Double windows with tilt and turn hardware
- + Insulated glazing, $U = 1.1 \text{ W/m}^2\text{K}$
- + CEE 400 V/32 A electrical input and output concealed behind inspection hatch
- + 2 empty conduits in the upper frame for the installation of additional cables (telephone, IT, etc.)
- + Electrical installation according to DIN VDE 0100
- + 2 ELA replaceable elements beneath the windows guarantee quick changing of modules: glass, gas/electric heating, air-conditioning unit possible
- + Can be combined with other ELA containers

20 foot ELA premium container

Article: CF20H30-B000
Dimensions: 6,055 mm × 3,000 mm × 2,890 mm
Clear room height: 2,500 mm

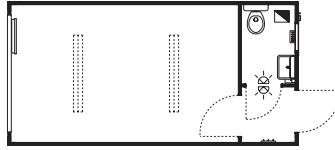


Features

- + 1 multi-purpose exterior door 875 mm × 2,000 mm with security cylinder lock, profile cylinder and 3 keys
- + Windscreen with ZK interior door and coat hook
- + 1 tilt and turn window approx. 2,500 mm × 1,200 mm with aluminium roller shutter
- + Electrical installation according to DIN VDE 0100, 400/230 V, 50 Hz
- + Electric input and output CEE 400 V/32 A
- + 2 surface-mounted light fixtures, each with 2 × 58 W
- + Grounded receptacles and light switches
- + 2 empty electrical boxes in the frame corners
- + Electric convector 2 kW with thermostat
- + Connected load: 2.4 kW

20 foot ELA premium container with 1 WC

Article: CF20H30-B1WC
Dimensions: 6,055 mm × 3,000 mm × 2,890 mm
Clear room height: 2,500 mm

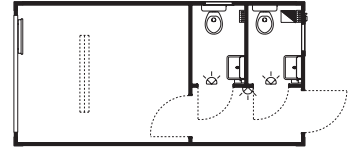


Features

- Same as CF20H30-B000, but with 1 additional WC compartment
- + 1 WC
- + 1 vanity
- + 1 hot water tank, 5 litres, 2 kW
- + Mirror, shelf, towel hook, paper holder
- + 1 sanitary tilt window
- + 1 frost monitor, 0.5 kW
- + Drain DN 100, supply 3/4"
- + Connected load: 4.9 kW

20 foot ELA premium container with 2 WCs

Article: CF20H30-B2WC
Dimensions: 6,055 mm × 3,000 mm × 2,890 mm
Clear room height: 2,500 mm

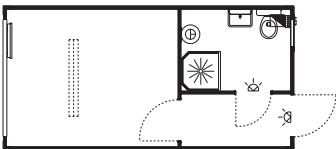


Features

- Same as CF20H30-B000, but with 2 additional WC compartments
- + 2 WCs
- + 2 vanities
- + 2 hot water tanks, 5 litres, 2 kW
- + Mirror, shelf, towel hook, paper holder
- + 2 sanitary tilt windows
- + 2 frost monitors, 0.5 kW
- + Drain DN 100, supply 3/4"
- + Connected load: 7.4 kW

20 foot ELA premium container with 1 shower/1 WC

Article: CF20H30-BDWC
Dimensions: 6,055 mm × 3,000 mm × 2,890 mm
Clear room height: 2,500 mm

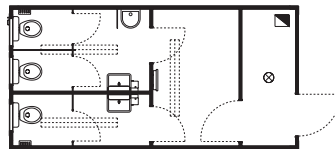


Features

- Same as CF20H30-B000, but with 1 additional shower/WC compartment
- + 1 WC
- + 1 vanity
- + 1 shower stall
- + 1 hot water tank, 30 litres, 2 kW
- + Mirror, shelf, towel hook, paper holder
- + 1 sanitary tilt window
- + 1 electric convector 1 kW with thermostat
- + Drain DN 100, supply 3/4"
- + Connected load: 5.2 kW

20 foot ELA premium container with 3 WCs (W/M)

Article: CF20H30-B3WC
Dimensions: 6,055 mm × 3,000 mm × 2,890 mm
Clear room height: 2,500 mm

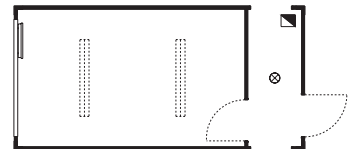


Features

- Same as CF20H30-B000, but with additional male/female WC compartments
- + 3 WCs
- + 1 urinal
- + 2 vanities
- + 2 hot water tanks, 5 litres, 2 kW
- + Mirror, shelf, towel hook, paper holder
- + 3 sanitary tilt windows
- + 2 frost monitors, 0.5 kW
- + Drain DN 100, supply 3/4"
- + Connected load: 6.4 kW

20 foot ELA premium container with interior corridor

Article: CF20H30-BF00
Dimensions: 6,055 mm × 3,000 mm × 2,890 mm
Clear room height: 2,500 mm



Features

- Same as CF20H30-B000, but with addition of an interior corridor
- + Can be combined with additional ELA containers
- + Corridor with/without door
- + Corridor lighting
- + Connected load: 2.4 kW