

ela[container]

**Mobile
room solutions**

ELA containers

Product overview

Quality all-rounder

With a width of 2.435 metres, this flexible container can be used to create any room



Premium container

3 metres wide with potential savings of up to 25 per cent



Sanitary container with optional wastewater tank

With WC and shower



First-aid containers

Rapid medical care



Storage containers

Secure, robust and practical



Workshop system

A compact, mobile workshop system



Characteristics

The ELA quality all-rounder is 2,435 mm wide. These standard container dimensions support the uncomplicated planning of new installations and the modification of existing systems. At the same time, the high-quality materials used for the container guarantee a service life far beyond standard expectations.

Characteristics

ELA premium containers have 20 per cent more space for living and working and thus lower costs by up to 25 per cent, as fewer containers are needed for the same usable area. With a width of 3 metres, it is half a metre wider than the ELA quality all-rounder. The additional 3 m² of space can accommodate larger layouts such as offices with three workstations instead of two.

Characteristics

Long-term workplaces and living areas require suitable sanitary areas. ELA quality all-rounders and premium containers are both available as sanitary containers – fully fitted with WC and urinals, sinks, showers and optional wastewater storage tanks. The optional wastewater tanks are not insulated.

Characteristics

The ELA first-aid container is equipped with vanity including mirror and shelf, pedal bin, examination table with swivel stool, office table and chair with armrest and two large aid kits.

Characteristics

ELA storage containers protect valuable tools or materials, are ready to use at short notice, dry and spacious – optionally available with heavy-duty shelves, workbenches and complete electrical installations. The extremely stable 6 mm steel frame construction with ELA anti-theft devices provides reliable protection for the goods in storage.

Characteristics

The ELA workshop system has a spacious usable area of 30 m² or 45 m², can be extended with any number of additional containers and is ready for immediate use with its extensive electrical installation and shelving plus optional workbench. The stable frame structure made of 6 mm steel with fully welded wall areas guarantees the security and longevity.

Features

- + Variable with ELA modular elements
- + LED lighting
- + Magnetic walls
- + Windows with roller shutters
- + Plug sockets
- + Space-saving room design

Features

- + Variable due to ELA modular elements
- + LED lighting
- + Magnetic walls
- + Windows with roller shutters
- + Plug sockets
- + Better ambience

Features

- + WC and urinal
- + Hand washbasin and mirror
- + Hot water storage
- + Shower cubicle
- + Wastewater tank

Features

- + Hand washbasin and mirror
- + Privacy glass
- + Examination table and swivel stool
- + Office table and chair with armrest
- + 2 large first-aid kits

Features

- + Stable, robust construction
- + Plug socket and heavy current
- + Anti-theft system
- + Optional: Heavy-duty shelves, Hook rail, Workbench with vice, Fire extinguisher, First-aid kit

Features

- + Stable, robust construction
- + Windows
- + 1 heavy duty shelf
- + Electrical installation
- + Anti-theft system
- + Any number of adjacent containers can be combined
- + Optional: Electrical installation, Workbench with vice, Fire extinguisher, First-aid kit, Hook rail

 [ELA 360° Tour – Experience containers virtually](#)



 [ELA 360° Tour – Experience containers virtually](#)



 [ELA 360° Tour – Experience containers virtually](#)



 [ELA 360° Tour – Experience containers virtually](#)



 [ELA 360° Tour – Experience containers virtually](#)



 [ELA 360° Tour – Experience containers virtually](#)



Quality all-rounder

With a width of 2.435 metres, this flexible container can be used to create any room



Flexible heating, ventilation and air conditioning

The modular concept makes it possible to fit the front end of a container with a modular frame. Where necessary, modular elements such as heaters, air-conditioning systems and panes of glass can be installed in the modular frame.

Modular elements

Blank element

Glass element

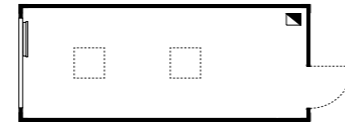
Split system

Gas heating

Electric heating

20 foot ELA quality all-rounder

Article: CF20H25-B00000



Dimensions

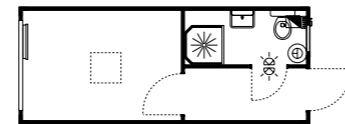
6,055 mm x 2,435 mm x 2,890 mm
Ceiling height: 2,500 mm

Equipment

- + 1 multipurpose exterior door, 875 mm x 2,000 mm, secure cylinder lock with three keys
- + Coat hook rail
- + 1 tilt-and-turn window, approx. 2,000 mm x 1,200 mm, with double glazing, aluminium roller shutter, anti-lifting device
- + Electrical installation, 400/230 V, 50 Hz
- + Electrical input and output, CEE 400 V/32 A
- + 2 LED lights, 40 W
- + Type F sockets and light switches
- + 2 empty junction boxes in the frame corners
- + Electric convector heater, 2 kW, with thermostat
- + Connected load: 2.1 kW

20 foot ELA quality all-rounder with 1 shower/1 WC

Article: CF20H25-BDWC00



Dimensions

6,055 mm x 2,435 mm x 2,890 mm
Ceiling height: 2,500 mm

Equipment

- as CF20H25-B00000 plus 1 shower/WC compartment
- + 1 WC
- + 1 hand washbasin
- + 1 shower cubicle
- + 1 hot water tank, 30 l, 2 kW
- + Mirror, tray, towel hook, toilet roll holder
- + 1 bathroom tilt window
- + 1 frost monitor, 0.5 kW
- + 1 hot water tank, 5 l, 2 kW
- + 2 LED lights, 18 W
- + DN 100 drain, pipe size 3/4 inch
- + Connected load: 4.6 kW

20 foot ELA quality all-rounder with 1 WC

Article: CF20H25-B1WC00



Dimensions

6,055 mm x 2,435 mm x 2,890 mm
Ceiling height: 2,500 mm

Equipment

- as CF20H25-B00000 but with 1 additional WC compartment
- + 1 WC
- + 1 hand washbasin
- + 1 hot water tank, 5 l, 2 kW
- + Mirror, tray, towel hook, toilet roll holder
- + 1 bathroom tilt window
- + 1 frost monitor, 0.5 kW
- + 2 LED lights, 18 W
- + DN 100 drain, pipe size 3/4 inch
- + Connected load: 4.7 kW

20 foot ELA quality all-rounder with interior corridor

Article: CF20H25-B000F0



Dimensions

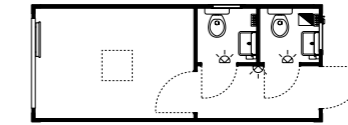
6,055 mm x 2,435 mm x 2,890 mm
Ceiling height: 2,500 mm

Equipment

- as CF20H25-B00000 but with additional interior corridor area
- + Can be combined with additional ELA containers
- + Corridor with/without door
- + 1 LED light, 18 W
- + Connected load: 2.1 kW

20 foot ELA quality all-rounder with 2 WCs

Article: CF20H25-B2WC00



Dimensions

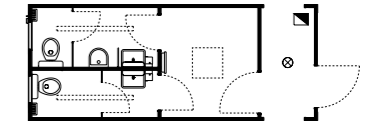
6,055 mm x 2,435 mm x 2,890 mm
Ceiling height: 2,500 mm

Equipment

- as CF20H25-B00000 but with 2 additional WC compartments
- + 2 WCs
- + 2 hand washbasins
- + 2 hot water tanks, 5 l each, 2 kW each
- + Mirror, tray, towel hook, toilet roll holder
- + 2 bathroom tilt window
- + 2 frost monitors, 0.5 kW each
- + 3 LED lights, 18 W
- + DN 100 drain, pipe size 3/4 inch
- + Connected load: 7.1 kW

20 foot ELA quality all-rounder with 2 WCs (men/women)

Article: CF20H25-SDH1F0



Dimensions

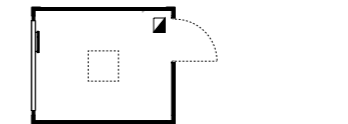
6,055 mm x 2,435 mm x 2,890 mm
Ceiling height: 2,500 mm

Equipment

- as CF20H25-B00000 but with additional WC compartments for men and women
- + 2 WCs
- + 1 urinal
- + 2 hand washbasins
- + 2 hot water tanks, 5 l each, 2 kW each
- + Mirror, tray, towel hook, toilet roll holder
- + 2 bathroom tilt window
- + 2 frost monitors, 0.5 kW each
- + DN 100 drain, pipe size 3/4 inch
- + 1 LED light, 18 W
- + 2 surface-mounted LED lights, 29 W each
- + Electric convector heater, 1 kW, with thermostat
- + Connected load: 6.1 kW

10 foot ELA quality all-rounder

Article: CF10H25-B00000



Dimensions

2,990 mm x 2,435 mm x 2,890 mm
Ceiling height: 2,500 mm

Equipment

- + 1 multipurpose exterior door, 875 mm x 2,000 mm, secure cylinder lock with 3 keys
- + 1 tilt-and-turn window, approx. 2,000 mm x 1,200 mm, with aluminium roller shutter
- + Electrical installation, 400/230 V, 50 Hz
- + Electrical input and output, CEE 400 V/32 A
- + 1 LED light, 40 W
- + Type F sockets and light switches
- + 2 empty junction boxes in the frame corners
- + Electric convector heater, 1 kW, with thermostat
- + Connected load: 1.1 kW

Premium container

3 metres wide with potential savings of up to 25 per cent



Flexible heating, ventilation and air conditioning

The modular concept makes it possible to fit the front end of a container with a modular frame. Where necessary, modular elements such as heaters, air-conditioning systems and panes of glass can be installed in the modular frame.

Modular elements

Blank element

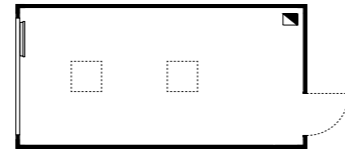
Glass element

Split system

Gas heating

Electric heating

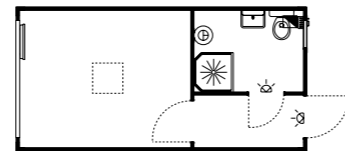
20 foot ELA premium container Article: CF20H30-B00000



Dimensions
6,055 mm x 3,000 mm x 2,890 mm
Ceiling height: 2,500 mm

Equipment
+ 1 multipurpose exterior door, 875 mm x 2,000 mm, secure cylinder lock with 3 keys
+ Coat hook rail
+ 1 tilt-and-turn window, approx. 2,500 mm x 1,200 mm, with double glazing, aluminium roller shutter, anti-lifting device
+ Electrical installation, 400/230 V, 50 Hz
+ Electrical input and output, CEE 400 V/32 A
+ 2 LED lights, 40 W each
+ Type F sockets and light switches
+ 2 empty junction boxes in the frame corners
+ Electric convector heater (2 kW) with thermostat
+ Connected load: 2.1 kW

20 foot ELA premium container with 1 shower/1 WC Article: CF20H30-BDWC00

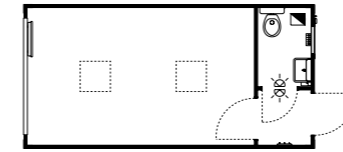


Dimensions
6,055 mm x 3,000 mm x 2,890 mm
Ceiling height: 2,500 mm

Equipment
as CF20H30-B00000 but with 1 additional shower/WC compartment

+ 1 WC
+ 1 hand washbasin
+ 1 shower cubicle
+ 1 hot water tank, 30 l, 2 kW
+ Mirror, tray, towel hook, toilet roll holder
+ 1 bathroom tilt window
+ 1 frost monitor, 0.5 kW
+ 2 LED lights, 18 W
+ 1 hot water tank, 5 l, 2 kW
+ DN 100 drain, pipe size 3/4 inch
+ Connected load: 4.6 kW

20 foot ELA premium container with 1 WC Article: CF20H30-B1WC00

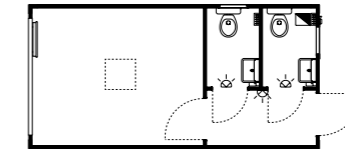


Dimensions
6,055 mm x 3,000 mm x 2,890 mm
Ceiling height: 2,500 mm

Equipment
as CF20H30-B00000 but with 1 additional WC compartment

+ 1 WC
+ 1 hand washbasin
+ 1 hot water tank, 5 l, 2 kW
+ Mirror, tray, towel hook, toilet roll holder
+ 1 bathroom tilt window
+ 1 frost monitor, 0.5 kW
+ 2 LED lights, 18 W
+ DN 100 drain, pipe size 3/4 inch
+ Connected load: 4.7 kW

20 foot ELA premium container with 2 WCs Article: CF20H30-B2WC00

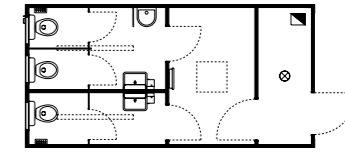


Dimensions
6,055 mm x 3,000 mm x 2,890 mm
Ceiling height: 2,500 mm

Equipment
as CF20H30-B00000 but with 2 additional WC compartments

+ 2 WCs
+ 2 hand washbasins
+ 2 hot water tanks, 5 l each, 2 kW each
+ Mirror, tray, towel hook, toilet roll holder
+ 2 bathroom tilt window
+ 2 frost monitors, 0.5 kW each
+ 3 LED lights, 18 W
+ DN 100 drain, pipe size 3/4 inch
+ Connected load: 7.1 kW

20 foot ELA premium container with 3 WCs (men/women) Article: CF20H30-B3WCF0

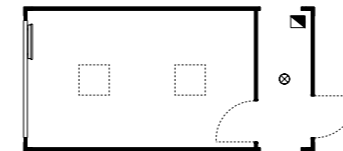


Dimensions
6,055 mm x 3,000 mm x 2,890 mm
Ceiling height: 2,500 mm

Equipment
as CF20H30-B00000 but with additional WC compartments for men and women

+ 3 WCs
+ 1 urinal
+ 2 hand washbasins
+ 2 hot water tanks, 5 l each, 2 kW each
+ Mirror, tray, towel hook, toilet roll holder
+ 3 bathroom tilt windows
+ 2 frost monitors, 0.5 kW each
+ 1 LED light, 18 W
+ 2 surface-mounted LED lights, 29 W each
+ Electric convector heater (1 kW) with thermostat
+ DN 100 drain, pipe size 3/4 inch
+ Connected load: 6.1 kW

20 foot ELA premium container with interior corridor Article: CF20H30-B000F0



Dimensions
6,055 mm x 3,000 mm x 2,890 mm
Ceiling height: 2,500 mm

Equipment
as CF20H30-B00000 but with additional interior corridor area

+ Can be combined with additional ELA containers
+ Corridor with/without door
+ 1 LED light, 18 W
+ Connected load: 2.1 kW

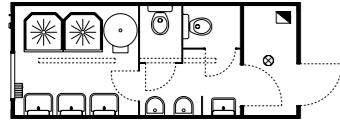
Sanitary containers

Container with WC, shower or combination with a width of 2.435 metres



20 foot ELA sanitary container with 2 showers/2 WCs

Article: CF20H25-S000F0



Dimensions

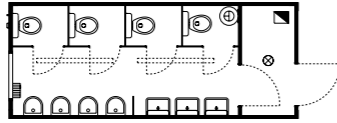
6,055 mm × 2,435 mm × 2,890 mm
Ceiling height: 2,500 mm

Equipment

- + 2 shower cubicles
- + 2 WCs
- + 2 urinals
- + 4 hand washbasins
- + Mirror, tray, towel hook, toilet roll holder
- + 1 tilt-and-turn window, approx. 1,000 mm × 1,200 mm, decorative glazing, no roller shutter
- + 1 fan heater, 2 kW
- + DN 100 drain, pipe size 1 inch
- + 1 hot water tank, 300 l, 6 kW
- + 1 LED light, 18 W
- + 2 damp-proof, surface-mounted LED lights, 29 W each
- + Connected load: 8.1 kW

20 foot ELA sanitary container with 4 WCs

Article: CF20H25-SWC4F0



Dimensions

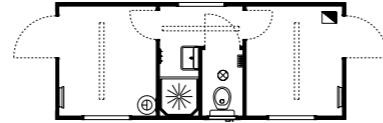
6,055 mm × 2,435 mm × 2,890 mm
Ceiling height: 2,500 mm

Equipment

- + 4 WCs
- + 4 urinals
- + 3 hand washbasins
- + Mirror, tray, towel hook, toilet roll holder
- + 1 tilt-and-turn window, approx. 1,000 mm × 1,200 mm, decorative glazing, no roller shutter
- + 1 fan heater, 2 kW
- + DN 100 drain, pipe size 1 inch
- + 1 hot water tank, 30 l, 2 kW
- + 1 LED light, 18 W
- + 2 damp-proof, surface-mounted LED lights, 29 W each
- + Connected load: 4.1 kW

20 foot ELA sanitary container black/white

Article: CF20H25-SSW000



Dimensions

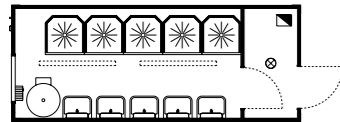
6,055 mm × 2,435 mm × 2,890 mm
Ceiling height: 2,500 mm

Equipment

- + 1 shower cubicle
- + 1 WC
- + 1 hand washbasin
- + 1 hot water tank, 30 l, 2 kW
- + Mirror, tray, towel hook, toilet roll holder
- + 1 bathroom tilt windows
- + 3 tilt-and-turn windows, approx. 1,000 mm × 1,200 mm, decorative glazing, no roller shutter
- + 1 fan heater, 2 kW
- + DN 100 drain, pipe size 1 inch
- + 1 frost monitor, 0.5 kW
- + 3 electric convactor heaters with thermostat, 1 kW each
- + DN 100 drain, pipe size 1 inch
- + 3 LED panels with IR presence detectors, 11 W each
- + 1 LED light, 18 W
- + Connected load: 5.5 kW

20 foot ELA sanitary container with 5 showers

Article: CF20H25-SDU5F0



Dimensions

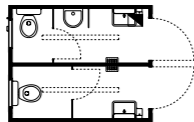
6,055 mm × 2,435 mm × 2,890 mm
Ceiling height: 2,500 mm

Equipment

- + 5 shower cubicles
- + 5 hand washbasins
- + Mirror, tray, towel hook
- + 1 tilt-and-turn window, approx. 1,000 mm × 1,200 mm, decorative glazing, no roller shutter
- + 1 fan heater, 2 kW
- + DN 100 drain, pipe size 1 inch
- + 1 hot water tank, 400 l, 6 kW
- + 1 LED light, 18 W
- + 2 damp-proof, surface-mounted LED lights, 29 W each
- + Connected load: 8.1 kW

10 foot ELA sanitary container with 2 WCs (men/women)

Article: CF10H25-SDH100



Dimensions

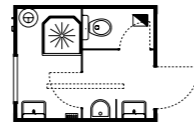
2,990 mm × 2,435 mm × 2,890 mm
Ceiling height: 2,500 mm

Equipment

- + 2 WCs (men/women)
- + 1 urinal
- + 2 hand washbasins
- + 2 hot water tanks, 5 l each, 2 kW each
- + Mirror, tray, towel hook, toilet roll holder
- + 2 bathroom tilt windows
- + 2 frost monitors, 0.5 kW each
- + DN 100 drain, pipe size 1 inch
- + 2 damp-proof, surface-mounted LED lights, 29 W
- + Connected load: 5.1 kW

10 foot ELA sanitary container with 1 shower/1 WC

Article: CF10H25-S00000



Dimensions

2,990 mm × 2,435 mm × 2,890 mm
Ceiling height: 2,500 mm

Equipment

- + 1 shower cubicle
- + 1 WC
- + 1 urinal
- + 2 hand washbasins
- + 1 hot water tank, 30 l, 2 kW
- + Mirror, tray, towel hook, toilet roll holder
- + 1 tilt-and-turn window, approx. 1,000 mm × 1,200 mm, decorative glazing, no roller shutter
- + 1 frost monitor, 0.5 kW
- + DN 100 drain, pipe size 1 inch
- + 1 damp-proof, surface-mounted LED light, 29 W
- + Connected load: 2.6 kW

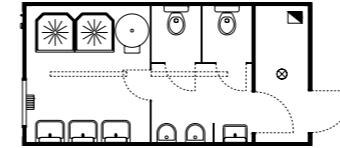
Sanitary containers

Container with WC, shower or combination with a width of 3 metres



20 foot ELA premium sanitary container with 2 showers/2 WCs

Article: CF20H30-S000F0



Dimensions

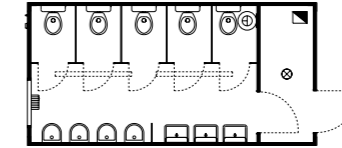
6,055 mm × 3,000 mm × 2,890 mm
Ceiling height: 2,500 mm

Equipment

- + 2 shower cubicles
- + 2 WCs
- + 2 urinals
- + 4 hand washbasins
- + Mirror, tray, towel hook, toilet roll holder
- + 1 tilt-and-turn window, approx. 1,000 mm × 1,200 mm, decorative glazing, no roller shutter
- + 1 fan heater, 2 kW
- + DN 100 drain, pipe size 1 inch
- + 1 hot water tank, 300 l, 6 kW
- + 1 LED light, 18 W
- + 2 damp-proof, surface-mounted LED lights, 29 W each
- + Connected load: 8.1 kW

20 foot ELA premium sanitary container with 5 WCs

Article: CF20H30-SWC5F0



Dimensions

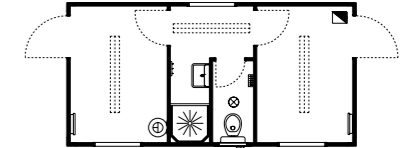
6,055 mm × 3,000 mm × 2,890 mm
Ceiling height: 2,500 mm

Equipment

- + 5 WCs
- + 4 urinals
- + 3 hand washbasins
- + Mirror, tray, towel hook, toilet roll holder
- + 1 tilt-and-turn window, approx. 1,000 mm × 1,200 mm, decorative glazing, no roller shutter
- + 1 fan heater, 2 kW
- + DN 100 drain, pipe size 1 inch
- + 1 hot water tank, 30 l, 2 kW
- + 1 LED light, 18 W
- + 2 damp-proof, surface-mounted LED lights, 29 W each
- + Connected load: 4.1 kW

20 foot ELA premium sanitary container black/white

Article: CF20H30-SSW000



Dimensions

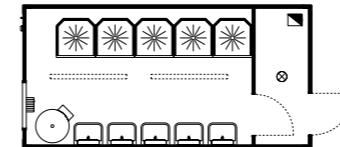
6,055 mm × 3,000 mm × 2,890 mm
Ceiling height: 2,500 mm

Equipment

- + 1 WC
- + 1 hand washbasin
- + 1 shower cubicle
- + 1 hot water tank, 30 l, 2 kW
- + Mirror, tray, towel hook, toilet roll holder
- + 1 bathroom tilt window
- + 3 tilt-and-turn windows, approx. 1,000 mm × 1,200 mm, decorative glazing, no roller shutter
- + 1 frost monitor, 0.5 kW
- + 3 electric convactor heaters (1 kW each) with thermostat
- + 3 LED panels with IR presence detectors, 11 W each
- + 1 LED light, 18 W
- + DN 100 drain, pipe size 3/4 inch
- + Connected load: 5.5 kW

20 foot ELA premium sanitary container with 5 showers

Article: CF20H30-SDU5F0



Dimensions

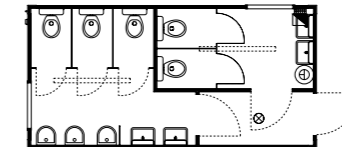
6,055 mm × 3,000 mm × 2,890 mm
Ceiling height: 2,500 mm

Equipment

- + 5 shower cubicles
- + 5 hand washbasins
- + Mirror, tray, towel hook
- + 1 tilt-and-turn window, approx. 1,000 mm × 1,200 mm, decorative glazing, no roller shutter
- + 1 fan heater, 2 kW
- + DN 100 drain, pipe size 1 inch
- + 1 hot water tank, 400 l, 6 kW
- + 1 LED light, 18 W
- + 2 damp-proof, surface-mounted LED lights, 29 W each
- + Connected load: 8.1 kW

20 foot ELA premium sanitary container with 5 WCs (men/women)

Article: CF20H30-SDH500



Dimensions

6,055 mm × 3,000 mm × 2,890 mm
Ceiling height: 2,500 mm

Equipment

- + 5 WCs (men/women)
- + 3 urinals
- + 4 hand washbasins
- + Mirror, tray, towel hook, toilet roll holder
- + 2 tilt-and-turn windows, approx. 1,000 mm × 1,200 mm, decorative glazing, no roller shutter
- + 2 frost monitors, 0.5 kW each
- + DN 100 drain, pipe size 1 inch
- + 1 hot water tank, 30 l, 2 kW
- + 1 LED light, 18 W
- + 2 damp-proof, surface-mounted LED lights, 29 W each
- + Connected load: 3.1 kW

Sanitary containers

Accessories



20 foot wastewater tank

Article: TF20N25-TANK



Dimensions

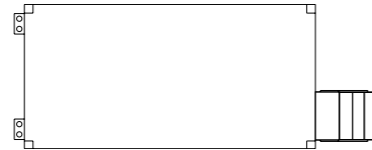
6,055 mm × 2,435 mm × 610 mm

Equipment

- + Compatible with ELA sanitary containers
- + Capacity approx. 6,000 l
- + Steel
- + Pebble grey exterior paintwork, RAL 7032
- + Intake/discharge port
- + With set of two steps and optional handrail

20 foot premium wastewater tank

Article: TF20N30-TANK



Dimensions

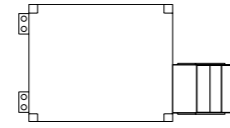
6,055 mm × 3,000 mm × 610 mm

Equipment

- + Compatible with ELA sanitary containers
- + Capacity approx. 7,200 l
- + Steel
- + Pebble grey exterior paintwork, RAL 7032
- + Intake/discharge port
- + With set of two steps and optional handrail

10 foot wastewater tank

Article: TF10N25-TANK



Dimensions

2,990 mm × 2,435 mm × 610 mm

Equipment

- + Compatible with ELA sanitary containers
- + Capacity approx. 3,000 l
- + Steel
- + Pebble grey exterior paintwork, RAL 7032
- + Intake/discharge port
- + With set of two steps and optional handrail

Steps with handrail

Article: TTR-600X100



Dimensions

1,300 mm × 600 mm
Step width: approx. 1,000 mm

Equipment

- + Robust, galvanised design
- + Can be attached to ELA wastewater tanks
- + 2 grated steps, each 1,000 mm wide
- + Integrated platform, 1,000 mm × 500 mm, with grating
- + Handrails on both sides
- + Custom designs also available

Exterior lifting station

Article: CFAEKAL-SHEB



Dimensions

800 mm × 1,200 mm × 1,700 mm

Equipment

- + Plug connection, CEE 400 V/32 A
- + Electrical sub-distribution with residual current circuit breaker and circuit breaker
- + Frost monitor
- + Lighting with movement sensors
- + Jung Compli 400 lifting station
- + DN 100 suction head, 290 mm
- + Connected load: approx. 1.7 kW

Water tank

Article: ELA-00014512



Dimensions

720 mm × 1,400 mm × 1,400 mm

Equipment

- + Capacity 1,100 l
- + Pump included
- + DN 400 screw cap with fastener
- + Coupling nut with 2 inch thread insert
- + Galvanised steel bindings
- + Moulded lower flange, closed

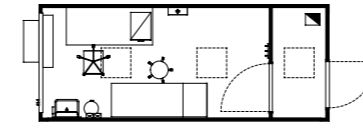
First-aid containers

Available in widths of 2.435 metres and 3 metres



20 foot first aid container

Article: CF20H25-BERH00



Dimensions

6,055 mm × 2,435 mm × 2,890 mm
Ceiling height: 2,500 mm

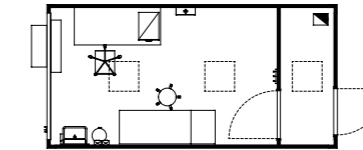
Equipment

as CF20H25-B00000 but with the following accessories:

- + 1 hand washbasin
- + 2 dispensers for soap and disinfectant
- + 2 first aid kits including emergency medicine
- + Examination table and swivel stool
- + Pedal bin
- + Office table and chair with armrest
- + 1 mobile storage container
- + Separate small corridor
- + Split system
- + Connected load: 2.1 kW

20 foot premium first aid container

Article: CF20H30-BERH00



Dimensions

6,055 mm × 3,000 mm × 2,890 mm
Ceiling height: 2,500 mm

Equipment

as CF20H30-B00000 but with the following accessories:

- + 1 hand washbasin
- + 2 dispensers for soap and disinfectant
- + 2 first aid kits including emergency medicine
- + Examination table and swivel stool
- + Pedal bin
- + Office table and chair with armrest
- + 1 mobile storage container
- + Separate small corridor
- + Split system
- + Connected load: 2.1 kW

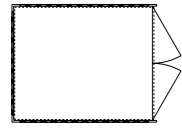
Storage containers

ISO-standard steel containers, spacious and durable



10 foot storage container

Article: CF10N25-M000



Dimensions

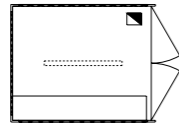
2,991 mm × 2,438 mm × 2,591 mm

Equipment

- + Heavy-duty double swing door
- + Sturdy steel frame construction in 6 mm thick special profile
- + Roof, side walls and end walls made of 1.5 mm thick, fully welded trapezoidal sheeting
- + 8 ISO container corners
- + Plywood glued multiple times over crosswise floor joists
- + ELA anti-theft system
- + Optional: Electric installation, heavy-duty shelves, hook rail, workbench with vice, fire extinguisher, first-aid kit

10 foot ELA storage container with shelves and electrical installation

Article: CF10N25-MREE



Dimensions

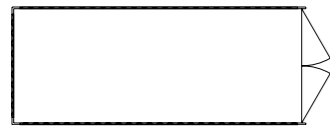
2,991 mm × 2,438 mm × 2,591 mm

Equipment

- as CF10N25-M000 but with the following accessories:
- + Electrical installation, 400/230 V, 50 Hz, IP44
- + Electrical input and output, CEE 400 V/32 A
- + Electrical sub-distribution with residual current circuit breaker and various circuit breakers
- + 1 surface-mounted LED light, 29 W
- + Type F sockets and light switches
- + 1 wall outlet, CEE 400 V/32 A
- + 1 heavy-duty shelf on the long side
- + ELA anti-theft system
- + Hook rail
- + Optional: Fan heater, 2 kW, workbench with vice, fire extinguisher, first-aid kit

20 foot storage container

Article: CF20N25-M000



Dimensions

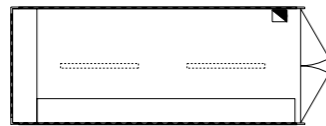
6,058 mm × 2,438 mm × 2,591 mm

Equipment

- + Heavy-duty double swing door
- + Sturdy steel frame construction in 6 mm thick special profile
- + Roof, side walls and end walls made of 1.5 mm thick, fully welded trapezoidal sheeting
- + 8 ISO container corners
- + Heavy timber floorboards (wood flooring) over the crosswise floor joists
- + ELA anti-theft system
- + Optional: Electric installation, heavy-duty shelves, hook rail, workbench with vice, fire extinguisher, first-aid kit

20 foot ELA storage container with shelves and electrical installation

Article: CF20N25-MREE



Dimensions

6,058 mm × 2,438 mm × 2,591 mm

Equipment

- as CF20N25-M000 but with the following accessories:
- + Electrical installation, 400/230 V, 50 Hz, IP44
- + Electrical input and output, CEE 400 V/32 A
- + Electrical sub-distribution with residual current circuit breaker and various circuit breakers
- + 2 surface-mounted LED lights, 29 W each
- + Type F sockets and light switches
- + 1 wall outlet, CEE 400 V/32 A
- + Heavy-duty shelving on the long side (L profile)
- + ELA anti-theft system
- + Hook rail
- + Optional: Fan heater (2 kW), workbench with vice, fire extinguisher, first-aid kit

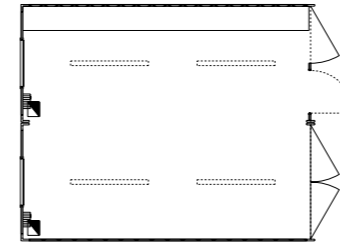
Workshop system

Combination of two or three workshop containers for a larger capacity



2 × 20 foot workshop containers

Article: R2C1G25-WERK



Dimensions

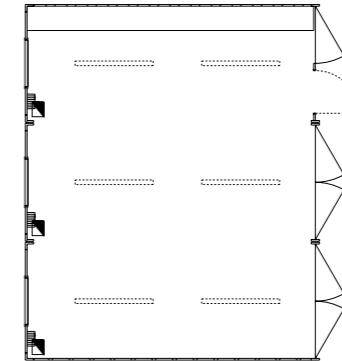
6,058 mm × 4,876 mm × 2,591 mm

Equipment

- + 1 half double swing door, 1 double swing door
- + 1 stable, galvanised multipurpose exterior double swing door, 875 mm × 2,000 mm, secure cylinder lock with 3 keys
- + Electrical installation, 400/230 V, 50 Hz, IP44
- + Electrical input and output in each container, CEE 400 V/32 A
- + Electrical sub-distribution with residual current circuit breaker and various circuit breakers
- + 4 surface-mounted LED lights, 29 W each
- + Type F sockets and light switches
- + 1 wall outlet, CEE 400 V/16 A
- + 1 wall outlet, CEE 400 V/32 A
- + 1 heavy-duty shelf
- + 2 fan heaters, 2 kW each
- + ELA anti-theft system
- + Optional: Workbench with vice, fire extinguisher, first-aid kit, hook rail
- + Connected load: 4.2 kW

3 × 20 foot workshop containers

Article: R3C1G25-WERK



Dimensions

6,058 mm × 7,314 mm × 2,591 mm

Equipment

- + 1 half double swing door, 2 double swing doors
- + 1 stable, galvanised multipurpose exterior double swing door, 875 mm × 2,000 mm, secure cylinder lock with 3 keys
- + Electrical installation, 400/230 V, 50 Hz, IP44
- + Electrical input and output in each container, CEE 400 V/32 A
- + Electrical sub-distribution with residual current circuit breaker and various circuit breakers
- + 6 surface-mounted LED lights, 29 W each
- + Type F sockets and light switches
- + 1 wall outlet, CEE 400 V/16 A
- + 1 wall outlet, CEE 400 V/32 A
- + 1 heavy-duty shelf
- + 3 fan heaters, 2 kW each
- + ELA anti-theft system
- + Optional: Workbench with vice, fire extinguisher, first-aid kit, hook rail
- + Connected load: 6.2 kW

Accessories

Optional accessories



Exterior stairs and platform
Direct access to the second level



Awning
Shields entrance areas from rain and sunlight



Sun circulation roof
Keeps the interior cool in sunny days



Sink
For cleanliness and hygiene



Full kitchenette
Everything you need for tea, coffee and a light snack



Dishwasher
Improved comfort for living and cooking



Anti-panic lock/knob (exterior)
Can be opened from inside at any time – for example, for emergency exits



Door security bar
For exceptionally high security requirements



Window grate
Break-in and vandalism prevention



Fridge
Storage space for fresh food and drinks



Microwave
For heating food and drinks quickly



Double hotplate
Classic equipment for kitchenettes and accommodation



Crush protection
Prevents children in particular from injuring themselves



Acoustic panel
For pleasant room acoustics, especially in offices and meeting rooms



ActivePort
Timely, qualitative and straightforward network technology



First-aid box
The extensive kit for effective first aid



Fire extinguisher
Indispensable for fire prevention



First-aid box
Always prepared for minor injuries



Site distribution board
Professional quality for a reliable electricity supply



Whiteboard
For effective teamwork in the container office – the whiteboard is magnetic.



Workbench
1,250 mm x 650 mm x 850 mm

Accessories
Furnishings



Filing cabinet
780 mm x 350 mm x 755 mm



Filing cabinet/wardrobe
800 mm x 520 mm x 1,800 mm



Sliding filing cabinet
1,200 mm x 420 mm x 780 mm



Table for 2 people
1,200 mm x 600 mm x 780 mm



Table for 4 people
1,200 mm x 800 mm x 780 mm or
1,600 mm x 800 mm x 780 mm



Table for 6 people
1,800 mm x 800 mm x 780 mm



Steel filing cabinet
800 mm x 380 mm x 1,800 mm



Steel double locker
500 mm x 500 mm x 1,900 mm



Wooden bench
1,500 mm x 400 mm x 430 mm



Desk, large
1,800 mm x 800 mm x 780 mm



Mobile file cabinet
420 mm x 600 mm x 590 mm



Height-adjustable desk
Flexible and comfortable working while sitting or standing



Padded chair
For comfortable seating



Stacking chair
Saves space when not in use



Swivel chair with armrest
Adjustable



Single wooden bed without foam mattress
2,000 mm x 900 mm x 600 mm



Single steel-frame bed without foam mattress
1,970 mm x 810 mm x 600 mm



Steel-frame bunk bed without foam mattress
1,970 mm x 810 mm x 1,400 mm

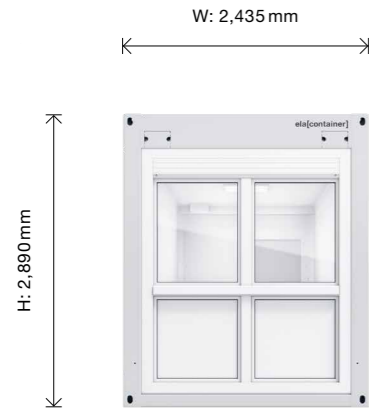


Swivel chair without armrest
Adjustable



Ergonomic office chair
Ideal seating comfort and individual adjustment options

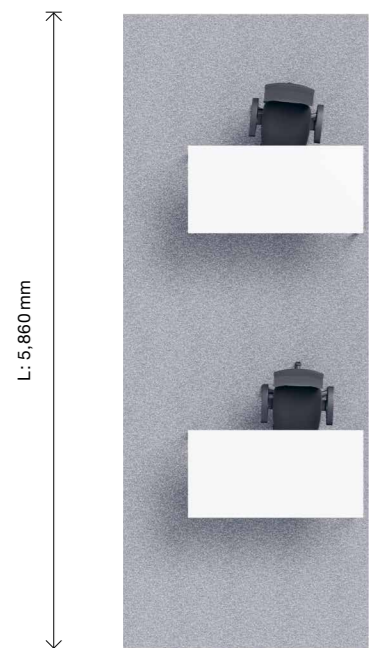
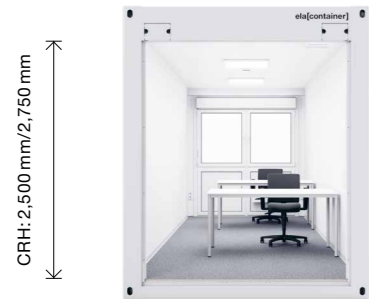
**Potential savings
with 3-metre-wide containers**



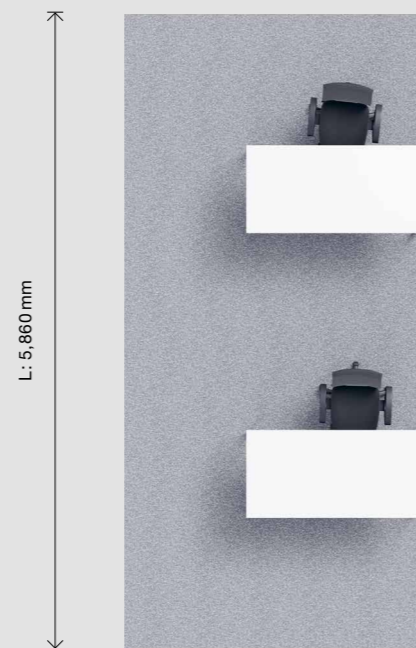
2,5 m



3 m



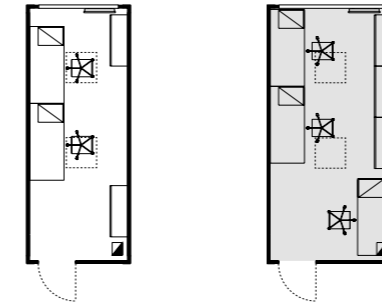
W: 2,261 mm



W: 2,826 mm

**Premium container compared
to the quality all-rounder**

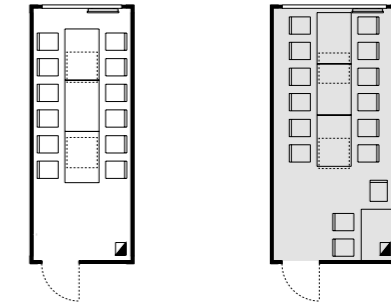
Office



Quality all-rounder
2 people

Premium container
3 people

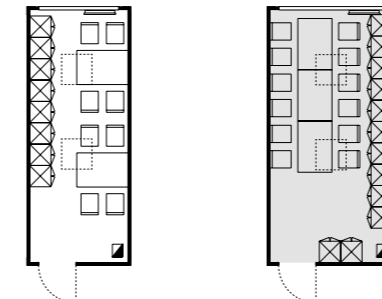
Meeting and break room



Quality all-rounder
12 people

Premium container
15 people

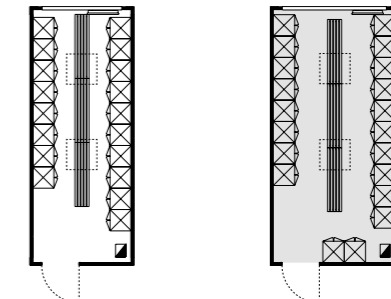
Common room and daytime accommodation



Quality all-rounder
8 people

Premium container
12 people

Changing room

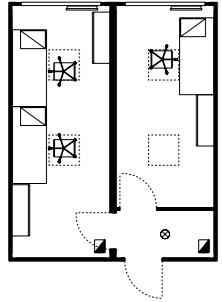


Quality all-rounder
18 people

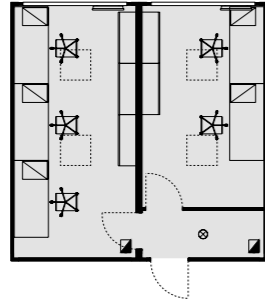
Premium container
20 people

Planning examples

Offices 01

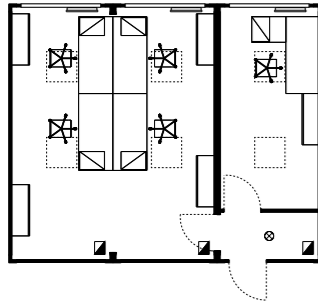


2 quality all-rounders
(each 2.5 metres wide)
2 people
1 person

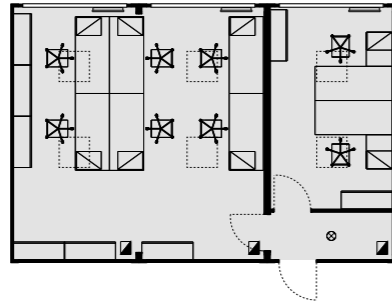


2 premium containers
(each 3 metres wide)
3 people
2 people

Offices 02

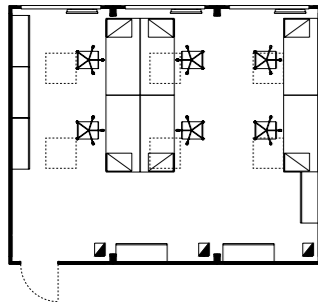


3 quality all-rounders
(each 2.5 metres wide)
4 people
1 person

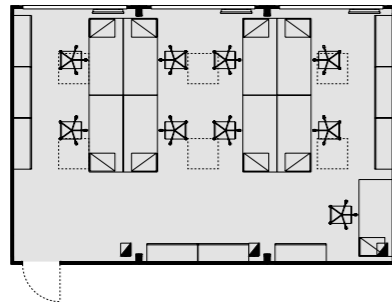


3 premium containers
(each 3 metres wide)
6 people
2 people

Offices 03



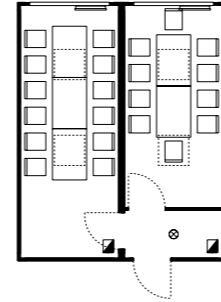
3 quality all-rounders
(each 2.5 metres wide)
6 people



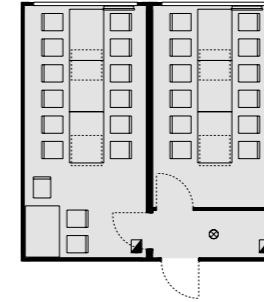
3 premium containers
(each 3 metres wide)
9 people

Planning examples

Meeting and break rooms 01

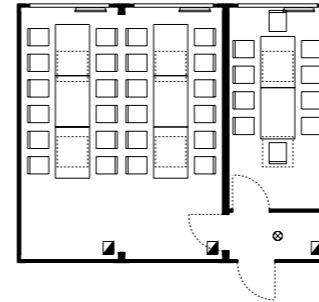


2 quality all-rounders
(each 2.5 metres wide)
12 people
10 people

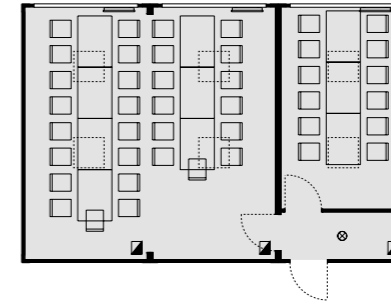


2 premium containers
(each 3 metres wide)
15 people
12 people

Meeting and break rooms 02

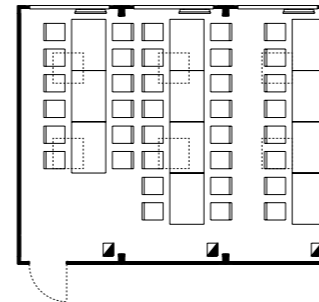


3 quality all-rounders
(each 2.5 metres wide)
24 people
10 people

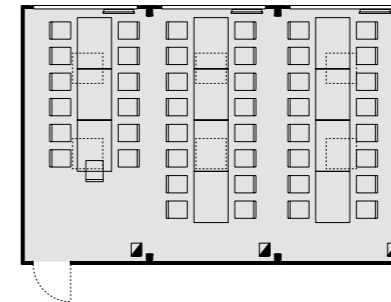


3 premium containers
(each 3 metres wide)
30 people
12 people

Meeting and break rooms 03



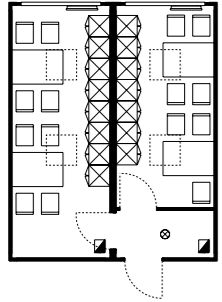
3 quality all-rounders
(each 2.5 metres wide)
36 people



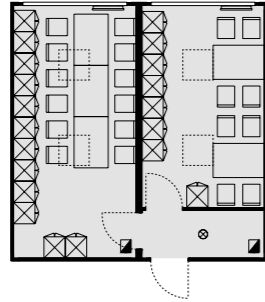
3 premium containers
(each 3 metres wide)
45 people

Planning examples

Common rooms and daytime accommodation 01

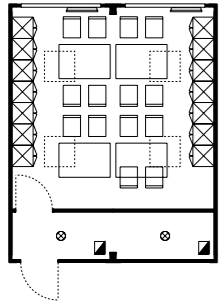


2 quality all-rounders
(each 2.5 metres wide)
8 people
7 people

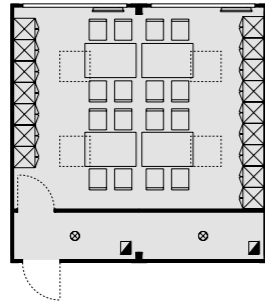


2 premium containers
(each 3 metres wide)
12 people
8 people

Common rooms and daytime accommodation 02

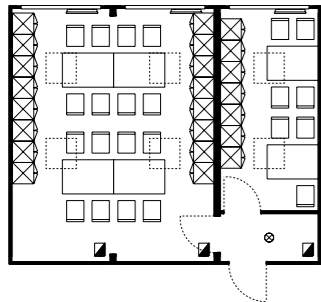


2 quality all-rounders
(each 2.5 metres wide)
14 people

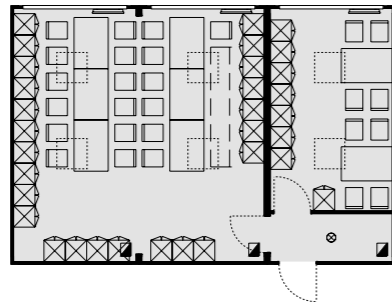


2 premium containers
(each 3 metres wide)
16 people

Common rooms and daytime accommodation 03



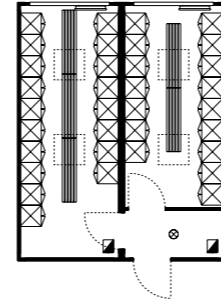
3 quality all-rounders
(each 2.5 metres wide)
16 people
7 people



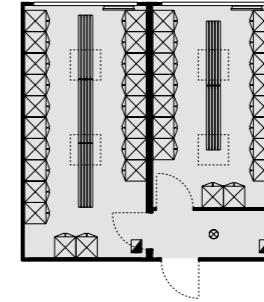
3 premium containers
(each 3 metres wide)
24 people
8 people

Planning examples

Changing rooms 01

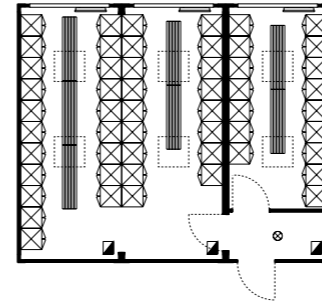


2 quality all-rounders
(each 2.5 metres wide)
18 people
16 people

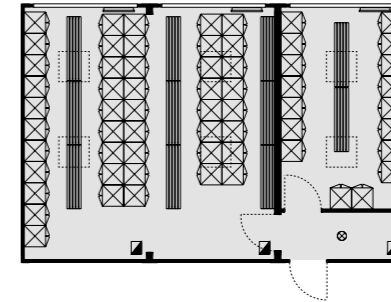


2 premium containers
(each 3 metres wide)
20 people
17 people

Changing rooms 02

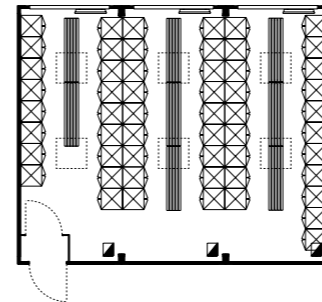


3 quality all-rounders
(each 2.5 metres wide)
37 people
16 people

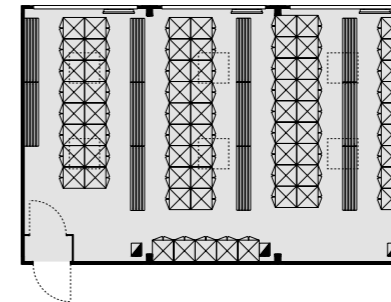


3 premium containers
(each 3 metres wide)
45 people
17 people

Changing rooms 03



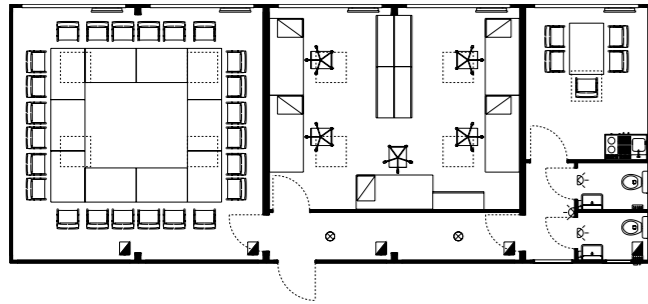
3 quality all-rounders
(each 2.5 metres wide)
55 people



3 premium containers
(each 3 metres wide)
66 people

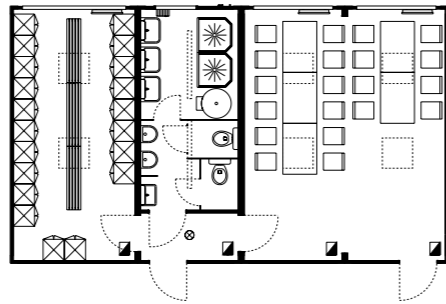
Planning examples
Container systems

Office with meeting room, 2 WCs, kitchenette with seating



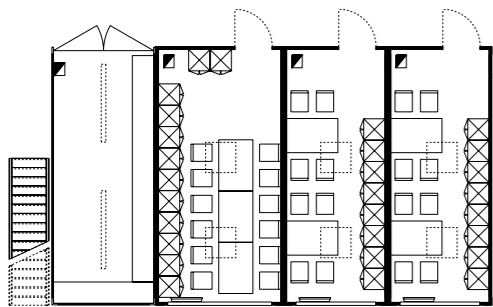
5 premium containers (3.0 m)
24 people (meeting room)
5 people (office)
5 people (kitchenette)

Daytime accommodation with changing room, bathroom with 2 showers and 2 WCs, break room



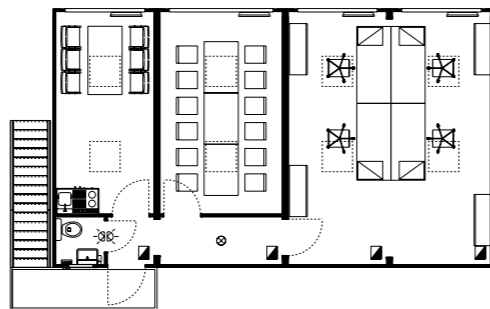
1 premium container (3.0 m)
1 sanitary container (2.5 m)
2 quality all-rounders (2.5 m)
20 people (changing room)
20 people (accommodation)

Common room and daytime accommodation, utility room (ground floor)



1 storage container (2.5 m)
1 premium container (3.0 m)
2 quality all-rounders (2.5 m)
12 people (daytime accommodation)
8 people (daytime accommodation)
8 people (daytime accommodation)

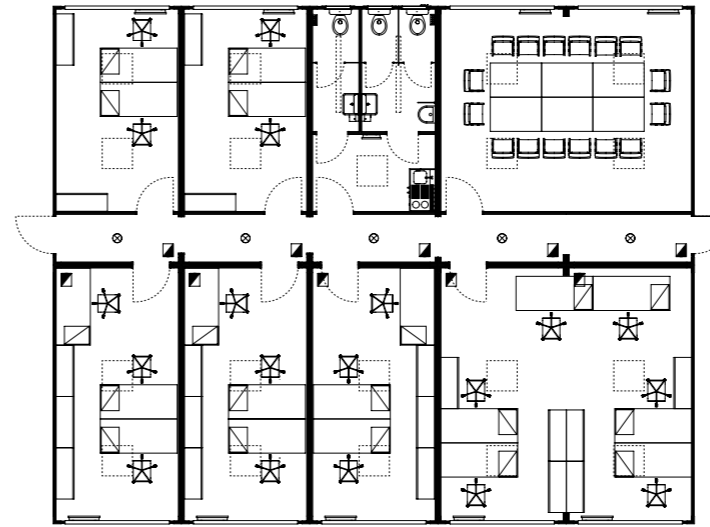
Office with meeting room, WC, kitchenette with seating (first floor)



3 quality all-rounders (2.5 m)
1 premium container (3.0 m)
6 people (kitchenette)
12 people (meeting room)
4 people (office)

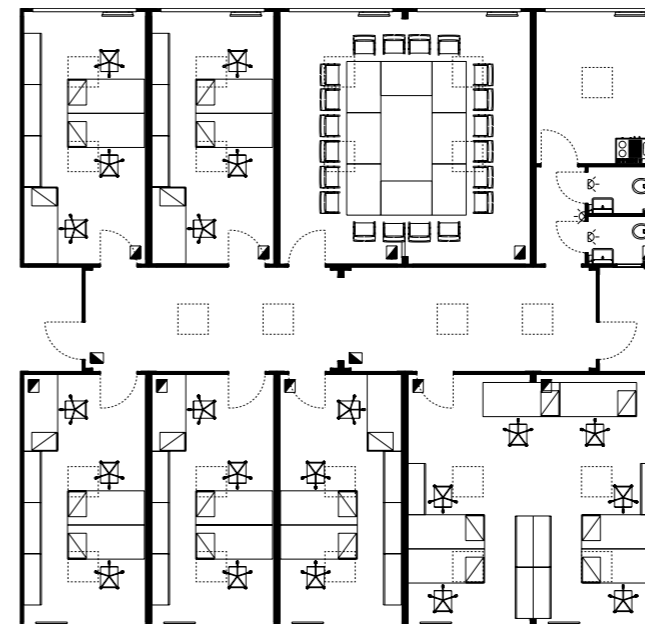
Planning examples
Container systems

Office complex with interior corridor system

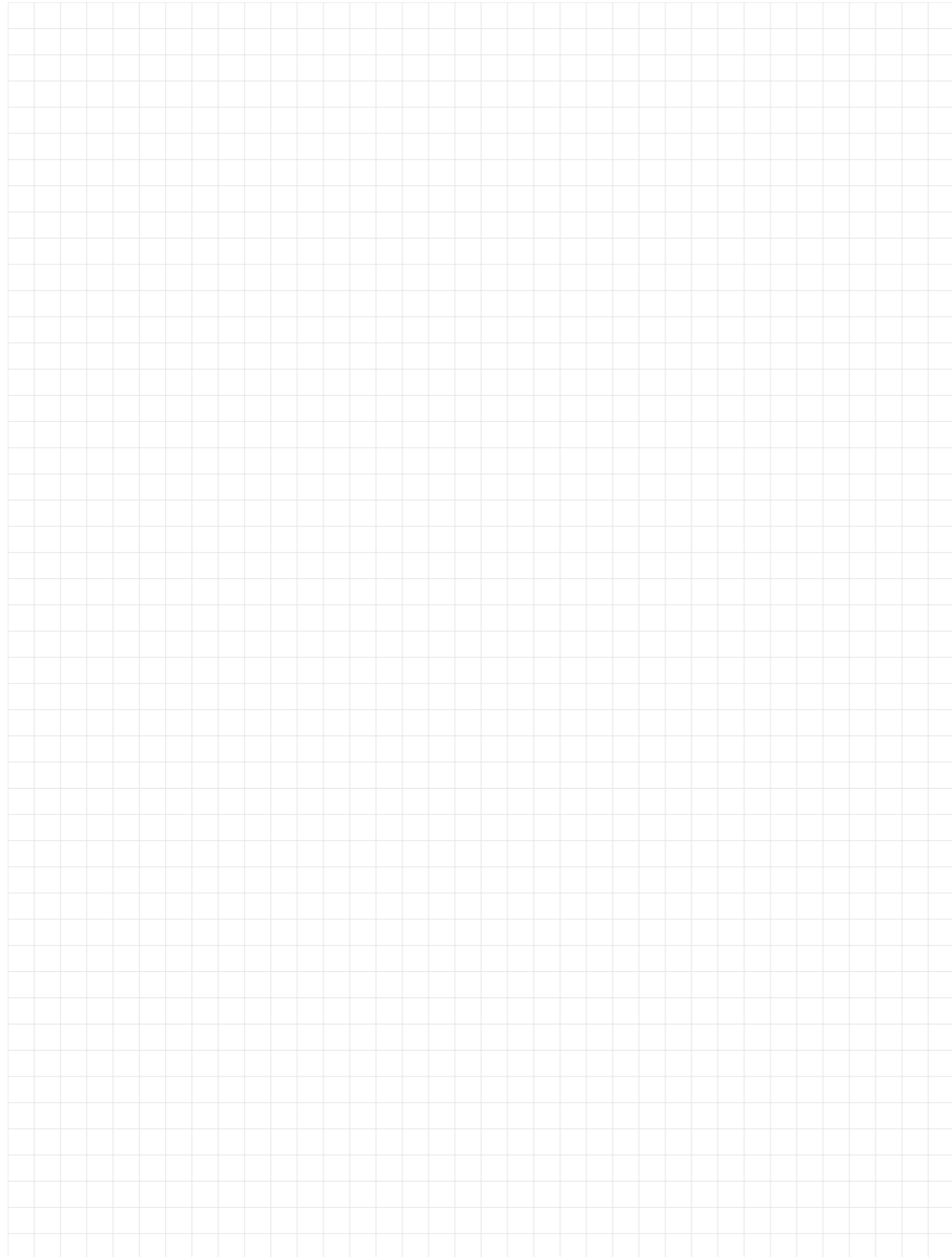


10 premium containers (3.0 m)
19 people (office)
16 people (meeting)
Bathrooms for men and women
Kitchenette

Office complex with container corridor system



10 premium containers (3.0 m)
2 quality all-rounders (corridor) (2.5 m)
21 people (office)
20 people (meeting)
Bathrooms for men and women
Kitchenette



Publisher:
ELA Container GmbH
Zeppelinstrasse 19-21
49733 Haren (Ems)
Germany

Tel +49 593 250 60
Fax +49 593 250 610

www.container.de
info@container.de

Conceptualisation, design, editing,
product visualisation:
schmitz Visuelle Kommunikation,
Wuppertal, Germany

Printer:
purpur GmbH, Cologne, Germany

Subject to technical
changes, product illustrations
may deviate. Any colour
differences between the images
in this product brochure and the
products themselves are the
result of the printing process
and are unavoidable.

© 2024
ELA Container GmbH,
Haren (Ems), Germany

ela[container]